

BERT

"Lapitoferus."

JANE

Those don't count. You made them up!

MRS. CORRY

And where do you think words came from in the first place? Somebody had to make them up.

MARY POPPINS

You know, we can always use the same letter more than once. Now let me see... Super... cali... fragil... istic... expi... ali... docious!

(#21 – SUPERCALIFRAGILISTICEXPIALIDOCIOUS.)

SUPERCALIFRAGILISTIC- EXPIALIDOCIOUS

MICHAEL: That's not a word.

MARY POPPINS: Of course it's a word.

And unless I'm very much mistaken,
I think it's a rather useful one.

(MARY POPPINS:)
(vocal second time only)

Vivace 3

When

5

try - ing to ex - press one - self it's frank - ly quite ab -

8

surd to leaf through leng - thy lex - i - cons to

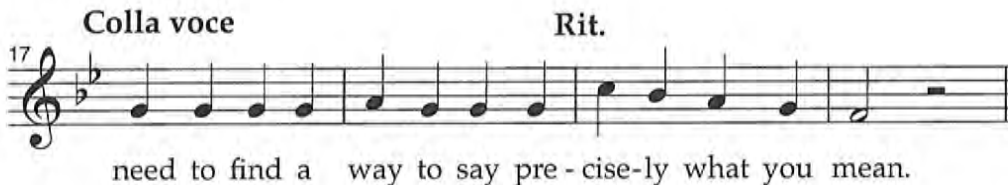
11

find the per - fect word. A lit - tle spon - tan -

14 

e - it - y keeps con - vers - a - tion keen. You

Colla voce **Rit.**

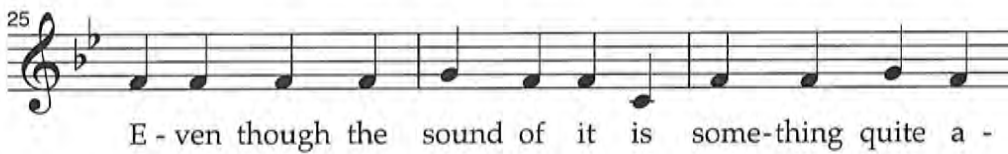
17 

need to find a way to say pre - cise-ly what you mean.

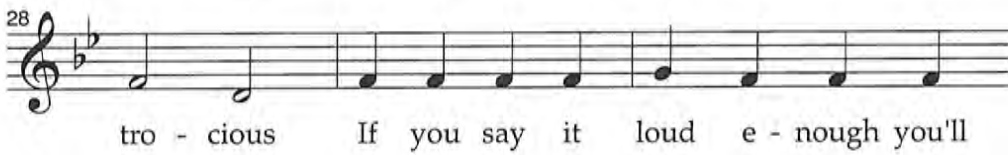
21 **Steady - In 2**



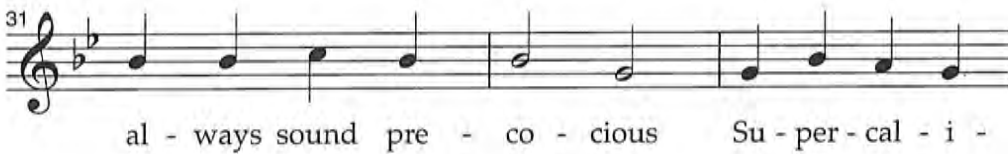
Su - per - cal - i - frag - i - lis - tic - ex - pi - al - i - do - cious!

25 


E - ven though the sound of it is some - thing quite a -

28 

tro - cious If you say it loud e - nough you'll

31 

al - ways sound pre - co - cious Su - per - cal - i -

34 

frag - i - lis - tic - ex - pi - al - i - do - cious.

(The CUSTOMERS draw in and join MRS. CORRY in the chorus.)

37 MRS. CORRY, CUSTOMERS:

p Um - did-dle id - dle id - dle Um did-dle ay

Um did-dle id - dle id - dle Um did-dle ay

JANE: But it doesn't mean anything!

MRS. CORRY,
CUSTOMERS (PART 1):

Um - did-dle id - dle id - dle Um did-dle ay

CUSTOMERS (PART 2):

Um - did-dle id - dle id - dle Um did-dle ay

MARY POPPINS: It can mean exactly what you want it to...

BERT:

When

(MRS. CORRY,
CUSTOMERS (PART 1):)

Um - did-dle id - dle id - dle Um did-dle ay

(CUSTOMERS (PART 2):)

Um - did-dle id - dle id - dle Um did-dle ay



45 (BERT:)

stone age men were chat-ting simp-ly grunt-ing would suf-

48 ALL: MRS. CORRY:

fice, UGH! Though if they'd heard this

50

word they might have used it once or

52 MARY POPPINS:

twice. I'm sure the Ro-man Em-pire on-ly

55

en-tered the ab-yss be-cause those La-tin

58

scho-lars ne-ver had a word like this.

BERT, MRS CORRY,
MARY, JANE, MICHAEL:

61



f Su-per-cal-i-frag-i-lis-tic-ex-pi-al-i-do-cious

CUSTOMERS:



Yum Yum Yum yum yum

ALL:

65



p If you say it soft-ly the ef-fect can be hyp-

68



no-tious *mf* Check your breath be-fore you speak in

JANE, MICHAEL: Yuck!

71



case it's hal-i-to-cious

ALL:

Poco accel.

74



f Su-per-cal-i-frag-i-lis-tic-ex-pi-al-i-doc-ious.

Più mosso

JANE, MICHAEL:

78

ff Um - did-dle id - dle id - dle Um did-dle ay

PART 1:

Um - did-dle id - dle id - dle Um did-dle ay

PART 2:

8 Um - did-dle id - dle id - dle Um did-dle ay

80

Um - did-dle id - dle id - dle Um did-dle ay

Um - did-dle id - dle id - dle Um did-dle ay

8 Um - did-dle id - dle id - dle Um did-dle ay

(ALL:)

82

subito mp Um did-dle id - dle id - dle Um did-dle ay

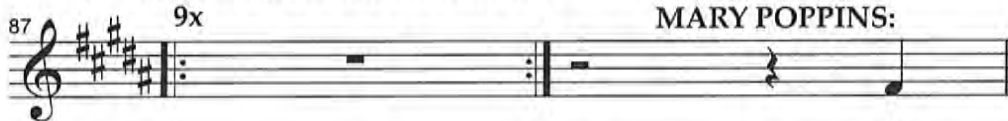


cresc. Um did-dle id-dle id-dle Um did-dle ay _____

MARY POPPINS: You know you can say it backwards,
which is suoicodilaipxecitsiligarifilacrepus.

MICHAEL: She may be tricky, but she's bloody good.

(*ALL gasp at MICHAEL's cheekiness.*)



MARY POPPINS:

So



when the cat has got your tongue there's



no need for dis - may Just sum-mon up this



BERT:

word and then you've got a lot to say. Pick



out those eigh-teen con-so-nants add six-teen vowels as



well and put them in an or - der which is

103 **Rit.**

ve - ry hard to spell.

(As MARY POPPINS spells, BERT acts out the letters.)

Slowly
MARY POPPINS:

105

S - u - p - e - r - c - a - l - i - f -

Fast

107

r - a - g - i - l - i - s - t - i - c - e - x - p -

JANE, MICHAEL: **BERT: Smarty Pants!**
(jumping in quickly)

109

i - a - l - i - d - o - c - i - o - u - s

(ALL join in the charades.)

Steady '4' **Accel. poco a poco**

ENSEMBLE:

112

S - u - p - e - r - c - a - l - i - f - r - a - g - i - l -

115

i - s - t - i - c - e - x - p - i - a - l - i - d - o - c - i - o - u - s

MARY, BERT, MRS. CORRY,
JANE, MICHAEL,
ENSEMBLE (PART 1):

(increasing in tempo)

118

S - u - p - e - r - c - a - l - i - f -

ENSEMBLE (PART 2):

S - u - p - e - r - c - a - l - i -

120

r - a - g - i - l - i - s - t - i - c - e - x - p -

f - r - a - g - i - l - i - s - t - i - c - e - x - p -

BERT: Here we go!

122

i - a - l - i - d - o - c - i - o - u - s

i - a - l - i - d - o - c - i - o - u - s

Allegro

125 (ALL:)

Su - per - cal - i - frag - i - lis - tic - ex - pi - al - i -

128

do - cious Ev - en though the sound of it is

131 

some-thing quite at - roc - ious If you say it

134 

loud en - ough you'll al - ways sound pre - co - cious

137 

Su - per - cal - i - frag - i - lis - tic

JANE, MICHAEL:

139 

Su - per - cal - i - frag - i - lis - tic

141 **ALL:** 

Su - per - cal - i frag - i - lis - tic -

145 

ex - pi - al - i doc - ious. —

153 **fff** 

Sup - er - cal - i - frag - il - is - tic - ex - pi - al - i - doc - ious!