

MICHAEL

Some game. I'd rather eat spinach.

MARY POPPINS

Come along, Bert.

MICHAEL

You can't come with us. You're too dirty. And we don't want to go to the stinky park anyway.

BERT

Oh, yes you do. 'Cause when you walk with Mary Poppins, you go to places you never dreamed of.

(# 10 – JOLLY HOLIDAY.)

JOLLY HOLIDAY

Freely

(BERT:) *mp* All that it takes is a spark, then

The first line of musical notation is in 4/4 time. It begins with a treble clef and a key signature of one sharp (F#). The melody starts with a quarter rest, followed by a triplet of eighth notes (G4, A4, B4), another triplet (C5, B4, A4), and ends with a quarter note (G4).

some-thing as plain as a park be - comes a won-der-land

The second line of musical notation continues the melody. It starts with a quarter note (G4), followed by a triplet of eighth notes (A4, B4, C5), another triplet (B4, A4, G4), and ends with a quarter note (G4).

(BERT moves into the park with MARY POPPINS. JANE and MICHAEL follow. PARK STROLLERS meander.)

All you 'ave to do — is look a - new.

The third line of musical notation starts with a treble clef and a key signature of one sharp. It begins with a quarter rest, followed by a half note (G4), and then a series of eighth notes: A4, B4, C5, B4, A4, G4.

Rall. Then you'll un - der - stand — why...

The fourth line of musical notation starts with a treble clef and a key signature of one sharp. It begins with a quarter note (G4), followed by a quarter note (A4), a quarter note (B4), a quarter note (C5), and ends with a quarter note (G4) marked with a fermata.

Tempo



It's a jol - ly 'ol - i - day with Ma - ry

MARY POPPINS: Oh really!

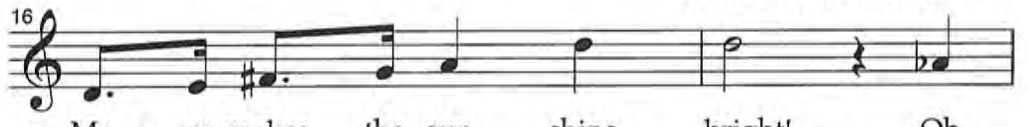


Ma - ry makes yer 'eart so light!



When the day is gray and or - di - nar - y

MARY POPPINS: You do talk nonsense, Bert.

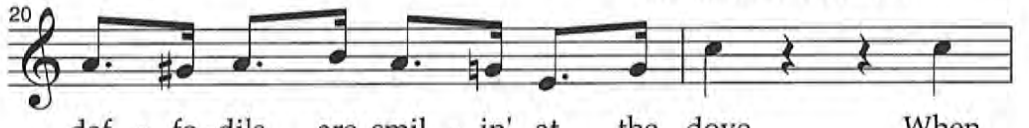


Ma - ry makes the sun shine bright! Oh,



'ap - pi - ness is bloom - ing all a - round 'er The

MARY POPPINS: I haven't the faintest idea what—



daf - fo - dils are smil - in' at the dove When

Più mosso



Ma - ry 'olds your 'and you feel so grand your

MARY POPPINS: You've
enough brass for all of us.

(BERT:)

24

'heart starts beat-in' like a big brass band *mf* Oh

PARK STROLLERS:

Shh!

(BERT:)

27

it's a jol - ly 'ol - i-day with Ma - ry No

(BERT:) (to the CHILDREN)
Come on, you two.

29

won - der that it's Ma - ry that we love!

Poco accel.

Poco più mosso

JANE, MICHAEL:

32

mp Bor - ing just like oth - er nan - nies

(BERT and MARY POPPINS exit. JANE and MICHAEL lag
behind until they are alone near a statue of NELEUS on a plinth.)

34

Think - ing parks are good for us

36

It's just sta - tues, ducks, and gran - nies

38 I don't un-der-stand all the fuss

JANE:
40 Is she do-ing it to spite us?

MICHAEL: JANE:
42 We could lose her for a lark! *mf* Per-

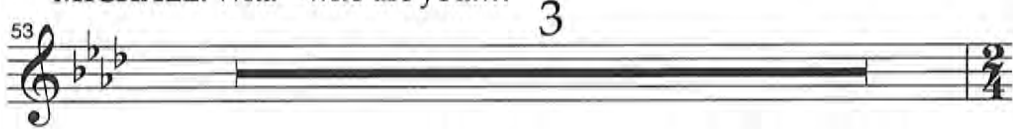
MICHAEL:
44 haps it's all a plot I'll tell you what She

JANE, MICHAEL:
46 seems so diff-erent but I bet she's not

(A creaking sound is heard.)
48 *mp* There is noth-ing to ex-cite us In

(The creaking sound grows louder and more confident.) JANE: What was that?
51 The Park

NELEUS: You're quite wrong, you know. When you take a walk with Mary anything can happen.
(JANE and MICHAEL look up. The statue of NELEUS is apparently smiling at them. They are terrified.)
MICHAEL: Wha—who are you...?

53 

NELEUS: I'm Neleus. I've waited half a century to take a walk on a sunny day like this!

56 

(MARY POPPINS enters with BERT, both of them sporting bright summer clothes as the park is transformed from dull and gray to bright and colorful. PARK STROLLERS enter wearing brightly colored clothing.)

59 

Each

61 

man out with his dog will stand a - gog To

63 

see a sta - tue take a gen - tle jog Oh

65 

it's a jol - ly hol - i-day with Ma - ry No



67

won - der that it's Ma - ry that we love!

(The PARK STROLLERS dance. STATUES come alive and dance with BERT.)

Molto rall. **Slightly Broader**

69

PART 1:

Oh, It's a jol - ly 'ol - i-day with

PART 2:

Let's go

71

Ma - ry Ma - ry makes your 'eart so

for a jaun - ty saun - ter We are

73

light When the day is gray and or - di-

bound to make a mark Looks like

75

nar - y Ma - ry makes the sun shine

all of us were born to Take a

77

bright Oh, 'ap - pi-ness is bloom - in' all a-

prom-e-nade in the park With our

79

round 'er The daf - fo-dils are smil - in' at the

fine - ly chis - led fea - tures We can

81

dove When Ma - ry 'olds your 'and you

look down from a - bove When Ma - ry 'olds your 'and you



83

feel so grand Your 'eart starts beat - in' like a
 feel so grand Your 'eart starts beat - in' like a

85

big brass band Oh it's a jol - ly 'ol - i-day with
 big brass band It's no

87

Ma - ry No won - der that it's Ma - ry that we
 won - der that it's Ma - ry that we

89

love ___ *f* No won - der that it's ___ Ma - ry that we ___
 love ___ *f* No won - der that it's ___ Ma - ry that we ___

92

ff love _____

ff love _____

(#11 – **BUT HOW?** A rainstorm breaks. The STATUES disappear and the PARK STROLLERS exit as the magical color seems to fade from the park. The dazed CHILDREN are left standing in front of NELEUS, who is back on the plinth.)

MICHAEL

Jane. Did that really happen?

JANE

Yes. But how?

NELEUS

Mary Poppins, of course.

(The CHILDREN gasp – then it wasn't a dream! A small thunderclap.)

JANE

But how did you make it happen?

MARY POPPINS

Anything can happen if you let it.

JANE

Mary Poppins, how long will you stay?

MARY POPPINS

We'll see.

MICHAEL

You won't leave us, will you, Mary Poppins?

MARY POPPINS

I'll stay until the wind changes.

(The BIRD WOMAN crosses past. JANE and MICHAEL take notice. MARY calls to get their attention:)

Now, run along in.

